



Santa Maria
WATER DISTRICT

2019
ANNUAL REPORT

SMWD History

The original water system of Santa Maria, Bulacan was constructed in 1931 under Mayor Agustin Morales and was managed and operated by the defunct National Waterworks and Sewerage Authority (NAWASA). With the dissolution of the latter in 1971, management was turned over to the local government. However, the water system could not be maintained and operated efficiently due to lack of funds. In order to address this predicament, **Santa Maria Water District (SMWD)** was established on September 26, 1986 by virtue of Sangguniang Bayan Resolution No. 12 series of 1986.

With the formation of SMWD, it fully took over the operations and management of the water supply system from the municipal government in accordance with the Presidential Decree No. 198 (as amended by P.D. No. 768, 1479 and 9286) also known as the Provincial Water Utilities Act of 1973.

A total of 241 concessionaires, three (3) production wells at Dulong Bayan, Macaiban and Villarica (the third well became idle due to low water pressure on December 1994) and one (1) concrete reservoir at Gulod, Poblacion were turned over to the SMWD.

On September 28, 1987, the Local Water Utilities Administration (LWUA) issued the Conditional Certificate of Conformance (CCC) No. 310 enabling financial, technical and regulatory services for SMWD and it entitled the SMWD to all the rights and privileges provided under P.D. 198, as amended.

In line with SMWD's progress, it also gained a number of recognitions along the way. In 2004, SMWD received the Most Outstanding Water District Nominee in the Medium Category for Luzon. In 2005, was the year that SMWD received a certification from Local Water Utilities Administration (LWUA) as a Credit Worthy Water District from 2002-2004. In 2006, SMWD received a Plaque of Appreciation in Sincere Recognition and Grateful Appreciation of its valuable support in advocating environment concerns in the protection and conservation of our natural resources, given by Sacred Heart Academy. By 2007, another Plaque of Appreciation with regards to Grateful Appreciation of its Participation in Seminar Training on Hydraulic Network Modeling was given to SMWD by Dan Water Philippines.

In 2016 up to 2018, SMWD was certified as a Drug-Free Workplace by Drug Check Phils, Inc. From then on, SMWD is conducting the annual Drug Test. In the year 2018, the Santa Maria Water District received three (3) National Awards respectively: ISO CERTIFIED 9001:2015, MOST OUTSTANDING WATER DISTRICT NOMINEE (Category B WD) and CERTIFICATE OF WATER SAFETY PLAN ACCEPTANCE. These awards certainly boost SMWD's morale to continue to strive for excellent service to its concessionaires and continuous participation in helping the community and the environment

Contents

1. SMWD LOGO	1
2. MISSION	2
3. CORE VALUES	2
4. SMWD PROFILE	3
4.1 Organization	3
4.2 Existing Facilities.....	4
5. WATER SUPPLY IMPROVEMENT AND OTHER ACCOMPLISHED PROJECTS	6
6. 2019 OPERATIONAL AND FINANCIAL HIGHLIGHTS	9
6.1 Organizational Achievements and Updates	9
6.2 Existing Water Rates and Number of Connections.....	10
6.3 Water Production and Non- Revenue Water.....	10
6.4 Financial Highlights.....	11
6.4.1. Financial Position	11
6.4.2 Financial Performance.....	15
6.5 Number of Personnel	18
7. SMWD ACTIVITIES	18
7.1 Water Saver Educational Program (WSEP) and Proper Waste Segregation Program	18
7.2 New Service Connection Orientation.....	19
7.3 Annual Drug Test	19
7.4 Bulacan Association of Water Districts (Activities)	20
7.5 Civil Service Commission (CSC) Activities.....	21
8. GENDER AND DEVELOPMENT (GAD)	21
9. SYSTEM DEVELOPMENT, IMPROVEMENT AND FUTURE PROJECTS	22
10. FIVE-YEAR FINANCIL AND OPERATING HIGHLIGHTS	22



1. SMWD LOGO

The SMWD Logo is composed of a leaf and water wave wherein from the leaf comes the water wave and then the water goes back to the leaf once again.

The leaf represents the environment and water wave represents our water supply. It shows that we get our water supply from our environment and in return, we take care of our environment by protecting the water resources.

The water drop on the center represents the whole Municipality of Santa Maria, and the circle that surrounds it shows the adequate, reliable and potable water supply that Santa Maria Water District can provide to its concessionaires.

The logo may also be pictured as the image of an eye, an eye that will serve as our instrument in rendering excellent and responsive customer service with the highest degree of professionalism and competence as a world-class water supply and sewerage service provider.

2. MISSION

To be a world-class water supply and sanitation service provider in the Municipality of Santa Maria, Bulacan by 2030.

VISION

To achieve customer satisfaction by providing adequate, reliable and potable water supply and sanitation services while preserving the environment for sustainable community development.

3. CORE VALUES

COMPETENCE Providing service and executing tasks successfully and efficiently.

RESPONSIBILITY To satisfactorily perform or complete assigned tasks in aiming to the success of SMWD.

UNITY Oneness of desire to serve and achieve the vision of SMWD.

SERVICE Being eager to supply and prioritize the public need of the community.

ACCOUNTABILITY Accepting and acknowledging responsibilities for tasks, actions, decisions and policies that encompasses the wholeness of being a public servant.

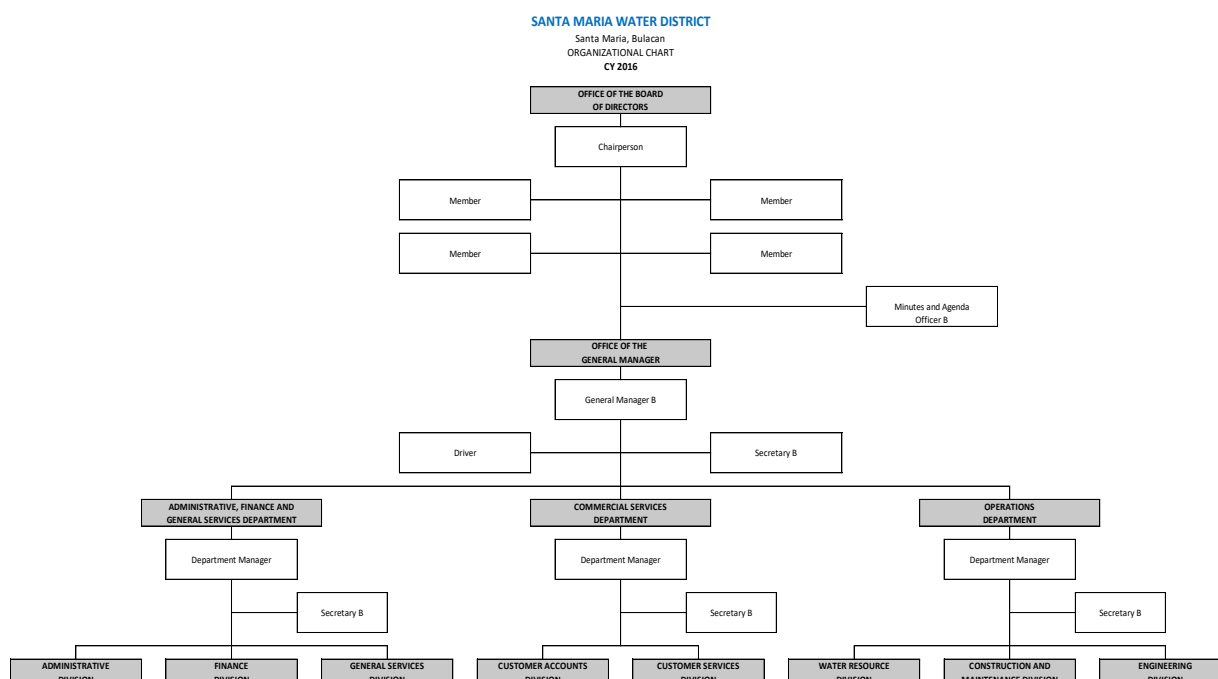
INTEGRITY Always aiming to uphold the state of being undivided and standing for what is true and noble for SMWD.

DEDICATION Willingness to run extra mile to give service to the public, and giving 100% commitment to SMWD.

4. SMWD PROFILE

4.1 Organization

The Santa Maria Water District was categorized as Category “B” with the onset of the Revised LWD-MaCRO. The Certificate of Category B WD was issued by the Local Water Utilities Administration (LWUA) last April 2, 2012. The Plantilla of Position was then approved by DBM in July 3, 2014 with 109 career positions. As of December 31, 2018, the SMWD employs 141 personnel: Regular – 80, Casual – 17, Job Order – 44.



A. The Board of Directors is composed of:

NAME	POSITION	SECTOR
1. Ms. Carmelita D. Francisco	Chairman	Civic-Oriented Sector
2. Ms. Teodora J. Catiis	Vice-Chairman	Business Sector
3. Engr. Brian Emerson Hernandez	Secretary	Professional Sector
4. Ms. Amelia S. de Jesus	Auditor	Education Sector
5. Ms. Analiza C. Ramirez	PRO	Women Sector

B. The Management Team:

Name	Designation	Contact Number
Engr. Carlos N. Santos Jr.	General Manager	09178150521
<i>Admin., Finance and General Services Department:</i>		
Jovita I. Dalmacio	Department Manager, Admin., Finance and General Services	09171131472
Jasmin L. Jose	Industrial Relation Development Assistant	09171393075
Charito S. Fernando	Procurement Analyst	09171388683
Maria Leonora S. Romarate	Division Manager, General Services Division	09171386309
Ginabelle G. Datolayta	Designated Transport Services Officer	09171387672
Jay Fee Del Rosario	Senior Corporate Accountant	09171085503
<i>Commercial Department:</i>		
Mary Diana S. Dela Cruz	Utilities/Customer Accounts Officer	09171387329
Vivian P. Policarpio	Utilities/Customer Services Assistant	09171388416
Ramon Villamin Jr.	Utilities/Customer Services Assistant	09171394021
<i>Operations Department:</i>		
Engr. Emmanuel Enrico A. de Vera	Department Manager, Operation	09175160733
Engr. Ermelo R. Perez	Senior Engineer	09171382175
Engr. Gerson Francisco	Senior Engineer	09171183945
Engr. Edgardo E. Dela Torre	Senior Engineer	09171544645

4.2 Existing Facilities

The SMWD derives its water supply from the ground water through twenty-two (21) production wells and bulk supply from Philippine Hydro (Ph), Inc. and Luzon Clean Water Development Corporation.

The SMWD has eight (8) reservoirs with a combined capacity of 3,873 cubic meter.

1. 272 cubic meter reinforced concrete tank at Gulod, Poblacion
2. 111 cubic meter elevated steel tank at Yakal St., Bgy. Sta. Clara
3. 200 cubic meter elevated steel tank at Garden Village, Bgy Pulong Buhangin
4. 90 cubic meter elevated steel tank at Glendale Subdivision, Bgy Sta. Clara
5. 1000 cubic meter glass-fused-to-steel bolted ground reservoir at Sitio Gulod I, Bgy. San Jose Patag (2018)
6. 1000 cubic meter glass-fused-to-steel bolted ground reservoir at Sitio Bato, Bgy. Guyong (2018)

7. 1000 cubic meter glass-fused-to-steel bolted ground reservoir located at Bgy. Manggahan with top elevation of 36.47 m. Expected to complete the construction by the 1st quarter of 2020.
8. 200 cu.m. reinforced concrete reservoir located at Sonoma Subd., Bgy. Sta. Cruz with top elevation of 32.18 m. was turned over by the homeowners.

To ensure potability of water supply, SMWD pump stations are equipped with hypochlorinations facilities. In addition, Halovac treatment is being applied to separate the iron and manganese content of ground water at Pump Stations: Caybanban, Kamatis, Policarpio and Sonoma

While the total existing distribution pipelines as of December 31, 2019 is at 226,970.20 linear meters in various sizes:

<i>PIPELINES DATA FOR THE YEAR 2019</i>		
300mm. diameter	9,948.50	Linear Meters
250mm. diameter	41.00	Linear Meters
200mm. diameter	8,440.4	Linear Meters
150mm. diameter	82,489.50	Linear Meters
100mm. diameter	51,463.75	Linear Meters
75mm. diameter	46,940.40	Linear Meters
50mm. diameter	27,646.65	Linear Meters
<i>TOTAL</i>	<i>226,970.20</i>	<i>Linear Meters</i>

December 2018 SMWD started to conduct air scouring activity along Caybanban St., Parada, along Pasong Kasay and San Vicente. This activity, air scouring, remove the scales formed inside the wall of the pipelines. The pipelines with water is subjected to air with high pressure ranging from 60psi to 100psi. With the help of the pressurized air, the water is flushed out continuously from the blow off valve removing the scales attached from the wall of the pipelines.

5. WATER SUPPLY IMPROVEMENT AND OTHER ACCOMPLISHED PROJECTS

In continuance of the Santa Maria Water District's water supply system improvement, the following projects were implemented this 2019:

1. Construction of another storage facility.

This is the 1,000 cubic meter Glass-Fused-to-Steel Bolted ground reservoir located at Barangay Manggahan with a top elevation of 36.47 m. The expected date of completion will be on the first quarter of 2020.

2. Pipeline Expansion and Extension Projects.

The SMWD programmed various pipeline expansion and extension projects for this year. We also implemented some projects that are included in the LWUA Funded Loan as our equity share:

- i. Brgy. Silangan Extension Project (Peso Farm to Silangan-Pandi Boundary)
- ii. Brgy. Catmon Sidestreet Extension Project (Bagong Barrio Street)
- iii. Brgy. Pulong Buhangin Sidestreet Extension Project (P. Guballa Street)
- iv. Brgy. Pulong Buhangin Sidestreet Extension Project (Camachile Street)
- v. Brgy. Pulong Buhangin Sidestreet Extension Project (Landicho Street)
- vi. Brgy. Buenavista Sidestreet Extension Project (Francisco Street)
- vii. Brgy. Buenavista Sidestreet Extension Project (Laot Street)
- viii. Brgy. Buenavista Sidestreet Extension Project (Sitio Libis)
- ix. Philhydro Bulk Supply Improvement Project (Section 1)
- x. Philhydro Bulk Supply Improvement Project (Section 3)

3. Mainline Replacement and Rehabilitation Projects.

Since the SMWD is in the continues process of maintaining low level of Non-Revenue Water, we have replaced old 150mm. diameter pipelines located along National Road, Barangay Guyong. A total of one hundred ten linear meters (110 l.m.) of HDPE pipelines replaced by new uPVC pipelines

4. Water Meter Cluster Standardization and Rehabilitation.

Although the SMWD did not focus with the Water Meter Cluster Standardization and Rehabilitation activities this year, there are still various standardization and rehabilitation projects occurred to accommodate the requests of the concessionaires and those meter stand and clusters which were not complying with the SMWD Standard and Specification that needed immediate action.

The water meter cluster standardization and rehabilitation has been an integral part of the reduction of SMWD's non-revenue water. These clusters were needed to be standardized and rehabilitated immediately to reduce the risk of losing water.

5. Pump Station Rehabilitation and Re-painting.

SMWD also programmed to rehabilitate and re-paint various pump stations. This is to improve its functionality and aesthetic. The rehabilitation and re-painting of Sonoma Pump Station was only approved on the last quarter of 2019, right after we re-aligned the savings from other accounts. We replaced a part of the discharge line in all of our Pump Stations. This is the chemical treatment injection point (Calcium Hypochlorite), due to corrosion. Three (3) of our elevated steel tanks were also repainted.

6. Well Rehabilitation and Lowering of Pump and Motor

We have accomplished two (2) Well Rehabilitation activities for the year 2019. These were Villarica Pump Station and Caybanban Pump Station. Well Rehabilitation requires air surging; declogging of screens; air lifting; camera logging; pulling out and re-installation of riser pipes, pump and motor; and pump testing. With this well rehabilitation, we have improved the quality of water that is being drawn from these wells. Also, there is a minimal improvement in the rated capacity of each well.

7. Water Treatment

SMWD pump stations are equipped with a hypo chlorinators to ensure potability of water prior to distribution. Disinfection is carried out by mixing HTH chlorine granules with water at a dosage of 1.5ppm and injecting it to the discharge line of each production source prior to distribution. Also, in Sonoma Pump Station, Brgy. Sta. Cruz, we are using Chlorine Dioxide Liquid to treat the color of the ground water inside Sonoma Subdivision.

In addition to the use of automatic feed pump, we are manually conducting chlorine shock activity using the calcium hypochlorite to eliminate foul odor. We are doing this in our Pulang Lupa Production Well, Brgy. Catmon quarterly; and in our Sonoma Well, Brgy. Sta. Cruz every month.

8. Additional Water Source

For the past four (4) years, the Santa Maria Water District is not exploring additional ground water supply. Additional water supply are coming from the Bulk Water Suppliers. But unfortunately the due to the continues growth in terms of population, service connection and water supply demand of the Municipality of Santa Maria, the Bulk Water Suppliers cannot cope up in increasing their supply.

The SMWD have decided to explore again our ground water source and have conducted a public bidding this December 2019 to drill two (2) production wells. The first one is adjacent with the abandoned well, located at T. Santiago St., Poblacion. The other one is adjacent to the existing Celeste Production Well, Celeste, Guyong and the existing production well will be abandoned because of the breakage of its casing, causing to produce a large amount of sand that affects its water quality. Both wells are intended to give additional water supply to augment the shortage of the supply coming from our existing production wells and coming from the Phil Hydro Bulk Water Supply.

The well drilling will commence on the first week of January 2020 and expected to be operational by 2nd Quarter of 2020.

9. SMWD New Office Building, 4-storey with Roof Deck

The Santa Maria Water District started the construction of the 4-storey Office Building with Roof Deck. The project was awarded to P.L. Juan Construction Inc., joint venture with New C.C. Barcelona Construction Corp. on May 30, 2019 and the Notice to Proceed was issued on June 6, 2019. The proposed SMWD 4-storey Office Building with Roof Deck is amounting to P 80,695,926.33, and is expected to be completed on the last quarter of 2020.

10. Other Projects

The Santa Maria Water awarded the design and installation of 30 HP booster pump at Sitio Bato Pump Station, Sitio Bato, Brgy. Guyong. This is to provide additional hydraulic head for the 1,000 cubic meter Glass-Fused-to-Steel Bolted Ground Reservoir. This was also awarded to Houston Hydrotech Products and Systems, Inc. on May 27, 2019, and the Notice to Proceed was issued on May 29, 2019 with the amount of P 2,444,300.00

6. 2019 OPERATIONAL AND FINANCIAL HIGHLIGHTS

6.1 Organizational Achievements and Updates

On January 2019, Board of Director Miguela G. Pleyto who has been in service for 20 years, has retired and vacated the seat for Women's Sector. She was then replaced by Ms. Analiza Ramirez on March 2019.

Also during the month of March 2019, Santa Maria Water District (SMWD) has gone through its **2nd ISO Surveillance** which is conducted by TUV Rheinland. SMWD continued to maintain ISO Certification and finished the surveillance with 0 Non-compliance.



By the month of May 2019, the Commission on Audit (COA) conducted an audit of financial transactions and operations of SMWD for the year ended December 31, 2018. The audit ended with the auditors' unmodified opinion on the fairness of presentation of the Financial Statements of SMWD.



In the year 2019, SMWD has reached the 30,000 marked Total Active Service Connections and has complied with the guidelines provided by in the DBM approved Revised Local Water District (LWD) Manual on Categorization, Re-Categorization. Therefore, on August 2019, the Santa Maria Water District with CCC No. 10 was categorized from Category B into “**CATEGORY A WATER DISTRICT**”.

SMWD continuously do its hard-work complying with all the necessary requirements leading to the approval of its 2018 Performance Based Bonus which was given to all its employees last December 2019.

6.2 Existing Water Rates and Number of Connections

Category	Meter Size	Minimum Charge	Number of Billed Service Connections as December 31, 2019
Residential	½”	195.00	29,001
Government	½”	195.00	152
Sub-Commercial C	½”	243.75	3,195
Sub-Commercial B	½”	292.50	1,110
Sub-Commercial A	½”	341.25	942
Commercial A	½”	390.00	918
Bulk/Wholesale			2
TOTAL BILLED CONNECTION			35,320
TOTAL ACTIVE CONNECTION			35,587
TOTAL SERVICES			37,613

6.3 Water Production and Non- Revenue Water

The Santa Maria Water District has produced a total of **11,050,538.98** cubic meters of treated water for the whole year and were distributed to the whole service area coverage. SMWD derives its water supply from twenty-one (21) production wells, four (4) tapping points from Philippine Hydro Inc., and one (1) tapping point from Luzon Clean Water Development Corp. – Bulacan Bulk (LCWDC); with a production of 4,650,106.78 cubic

meter from ground water, 5,758,249.75 cubic meter from PhilHydro and 642,182.45 cubic meter from LCWDC. Average water production was 920,878.25 cubic meter per month.

The computed average non-revenue water for 2019 was 13.41%. It consists of leakages, flushing, unauthorized water use and other unbilled uses.

	NEW 2018 Year End	JANUARY	FEBRUARY	MARCH	APRIL	MAY	JUNE	JULY	AUGUST	SEPTEMBER	OCTOBER	NOVEMBER	DECEMBER	YTD
Water Produced														
Ground Water	4,442,817.46	408,838.44	349,470.24	371,352.90	378,350.00	367,943.00	415,777.00	396,484.00	384,936.33	434,537.00	377,968.68	419,279.44	354,871.00	4,658,106.78
Bulk Water (PhilHydro)	5,559,438.90	479,630.29	483,133.00	429,665.10	493,899.40	481,896.10	491,755.20	478,814.10	492,050.46	471,810.81	464,276.10	499,422.30	492,888.80	5,758,249.75
(LCWDC)				80,898.56	83,308.36	90,890.41	83,720.29	98,187.44	66,257.77	36,488.18	48,478.21	90,689.55	43,099.00	639,882.99
Bulk Water Adjustment - LCWDC									2,999.45					2,999.45
Total Water Produced	10,002,256.36	888,468.73	832,603.24	801,117.56	872,249.40	849,839.10	907,522.29	875,298.10	887,986.54	906,826.19	896,712.99	909,371.29	896,970.00	11,098,538.98
Metered Billed														
Actual cum. Billed	8,943,336.00	781,941.00	699,829.00	725,009.00	801,232.00	790,274.00	868,483.00	801,197.00	837,525.00	875,466.00	784,077.00	876,903.00	756,796.00	9,574,812.00
Less: BAW SL Leaks	8,707.00	344.00	185.00	324.00	815.00	152.00	383.00	703.00	512.00	317.00	936.00	123.00	349.00	5,873.00
Others	73,617.00	(7,557.00)	3,251.00	272.00	(46,000)	62.00	(11,053.00)	930.00	2,802.00	16,830.00	(9,228.00)	349.00	(51.00)	564.00
Total Metered Billed	8,860,992.00	773,140.00	696,695.00	724,633.00	804,471.00	790,069.00	877,073.00	790,724.00	834,215.00	884,216.00	794,141.00	877,281.00	756,296.00	9,568,973.00
Metered Unbilled														
Fin Hydrants	4,446.00	253.00	214.00	316.00	486.00	352.00	87.00	136.00	93.00	240.00	215.00	130.00	94.00	2,314.00
BAW SL Leaks	8,707.00	344.00	185.00	324.00	815.00	152.00	383.00	703.00	512.00	317.00	936.00	123.00	349.00	5,873.00
Total Metered Unbilled	13,153.00	597.00	399.00	640.00	1,301.00	504.00	670.00	839.00	605.00	557.00	1,171.00	483.00	443.00	8,187.00
Unmetered Unbilled														
Maintenance Leases	1,801,686.95	112,553.78	50,418.63	111,021.87	52,703.69	90,169.56	172,041.98	184,664.67	102,851.26	44,877.31	100,362.66	90,340.44	67,139.52	1,362,913.68
New Connection Leases	2,488.40	147.20	147.20	239.80	239.80	294.00	248.40	247.60	340.40	181.20	218.80	207.20	150.20	2,437.40
Flushing	128,807.83	11,183.38	10,389.08	11,348.72	11,066.22	12,833.46	20,934.75	12,011.91	11,830.16	18,220.82	18,423.93	14,401.26	13,986.93	168,389.83
Total Unmetered Unbilled	1,933,980.18	123,894.36	60,964.91	122,638.29	64,009.51	103,297.02	193,245.13	197,824.18	116,011.82	63,259.74	119,005.41	64,948.90	61,240.64	1,534,683.91
TOTAL ACCOUNTED WATER	10,894,972.18	917,645.36	757,660.11	847,271.29	867,971.51	897,801.82	1,070,308.13	997,592.18	921,425.82	947,125.74	915,917.41	941,630.90	818,107.64	10,933,604.91
NON-REVENUE WATER (%)	13.15	10.71	11.84	15.01	16.79	16.65	11.33	14.34	14.83	9.85	11.04	9.61	15.30	13.41
Total Volume of NRW (cum.)	1,341,264.56	99,134.73	140,172.24	127,984.56	195,074.74	157,872.53	112,339.36	133,888.54	140,036.79	85,746.19	98,371.99	93,170.29	134,556.80	1,402,261.98
Effective Rate per cum. (P)	27.17	26.92	27.05	27.05	27.05	26.97	26.57	26.90	27.23	27.35	27.26	27.19	27.26	27.26
Per Value of Non-Revenue Water (P)	36,119,022.00	2,684,000.61	3,773,436.79	3,487,260.26	4,394,771.72	4,257,821.13	3,064,862.91	3,601,483.43	3,803,256.28	2,392,797.26	2,680,630.45	2,533,866.19	3,681,474.85	46,346,739.95
UNACCOUNTED FOR WATER (%)	1.89	(3.30)	8.47	0.32	0.38	5.28	(8.23)	(8.81)	3.42	1.04	(7.45)	3.86	5.91	1.26

6.4 Financial Highlights

6.4.1. Financial Position

The financial position as of December 31, 2019 indicates the ability of Santa Maria Water District (SMWD) to deliver expected services and benefits to the public and other stakeholders. Total assets of SMWD of P561.18 million in CY 2018 is higher by P6.27 million of 1.13 percent than the CY 2018 total assets of P554.91 million. Total liabilities of P 195.55 million is lower by P15.46 million or 7.33 percent than CY 2018 total liabilities of P211.06 million. Total equity of P365.63 million in CY 2019 is higher by P70.74 million or 25.90 percent than CY 2018 total equity of P273.16 million. Chart I-1 presents the graphical comparison of the financial position of SMWD for CYs 2019 and 2018.

**Chart I-1 Comparative Financial Position
(in million pesos)**



Assets – P561.18 million

Total assets of P561.18 million is composed of P131.84 million of 23.9 percent current assets and P429.35 million or 76.51 percent non-current assets.

Total current assets of P131.84 million in CY 2019 decreased by P14.36 million. This is mainly due to the decrease in cash and cash equivalents in the amount of P11.65 million or 12.06 percent. In addition, a decrease of P10.02 million or 29.71 percent in the amount inventories resulted in the substantial change in current assets. Table I-1 presents the Comparative Composition of Current Assets.

**Table I-1 Comparative Composition of Current Assets
(in thousand pesos)**

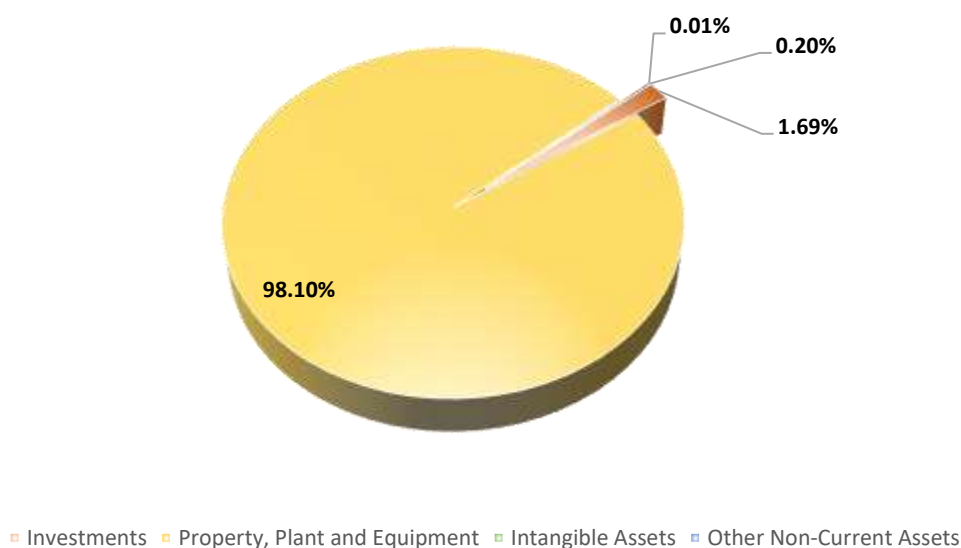
Particulars	2019	2018	Variances	% Variance
Cash and Cash Equivalents	84,940	96,587	(11,647)	(12.06%)
Receivables	5,153	4,255	898	21.10%
Inventories	24,219	33,730	(9,511)	(28.20%)
Other Current Assets	17,523	10,439	7,084	67.87%
Total Current Assets	131,835	145,010	(13,175)	(9.09%)

Exhibited in Chart 1-2 is the composition of current assets. Large portion of current assets pertains to cash and cash equivalents amounting to P84.94 million or 64.43 percent.

Chart I-2 Composition of Current Assets



Chart I-3 Composition of Non-Current Assets



Non-current assets increased by P20.12 million or 4.91 percent, from P409.90 million in CY 2018 to P429.35 million in CY 2019. Huge portion of non-current assets pertains to Property Plant and Equipment of P421.17 million or 98.10 percent of the total non-current assets. Table I-2 shows the comparative composition of non-current assets. In addition, Chart I-3 shows the breakdown of the non-current assets.

Table I-2 Comparative Composition of Non-Current Assets
(in thousand pesos)

Particulars	2019	2018	Variances	% Variance
Investments	7,253	6,654	599	9.00%
Property, Plant and Equipment	421,176	401,631	19,545	4.87%
Intangible Assets	48	67	(19)	(28.46%)
Other Non-Current Assets	869	872	(3)	(0.33%)
Total Non-Current Assets	429,345	409,901	20,122	4.91%

Liabilities – P195.55 million

Total liabilities of P195.55 million in CY 2019 was a result of a decrease of P15.46 million or 7.33 percent from CY 2018 total liabilities of P 211.02 million. Of the total liabilities of P195.55 million in CY 2019, P64.03 million or 32.74 percent are current while P131.53 million or 67.26 percent are non-current. Table I-3 and Table 1-4 indicates the comparative composition of current and non-current assets respectively.

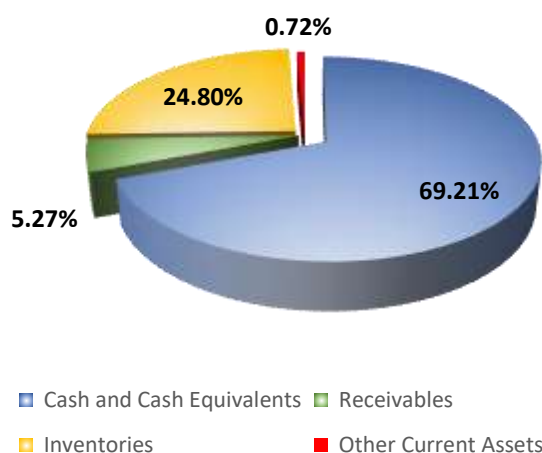
Table I-3 Comparative Composition of Current Liabilities
(in thousand pesos)

Particulars	2019	2018	Variances	% Variance
Financial Liabilities	44,313	46,972	(2,659)	(5.66%)
Inter-Agency Payables	3,373	4,208	(835)	(19.84%)
Trust Liabilities	15,878	15,246	631	4.14%
Other Payables	462	365	97	26.62%
Total Current Liabilities	64,026	66,791	(2,765)	(4.14%)

+

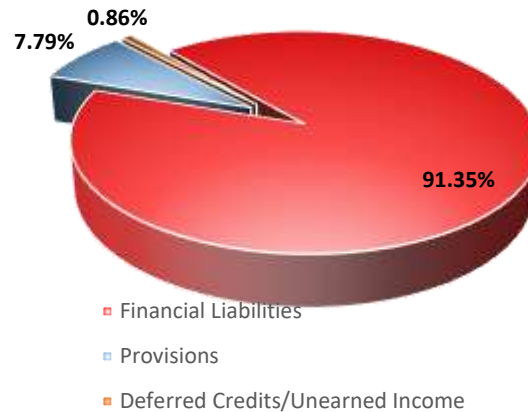
Charts I-4 and I-5 present the composition of current liabilities of current and non-current liabilities, respectively.

Chart I-4 Composition of Current Liabilities



Financial liabilities of P44.31 million represents 69.21 percent of the total current liabilities. This pertains to accounts payable and current portion of Bills/Bonds/Loans Payable of SMWD to Local Water Utilities Administration (LWUA), Philippine National Bank (PNB), National Housing Authority (NHA), Land Bank of the Philippines (LBP) and other creditors.

Chart I-5 Composition of Non-Current Liabilities



The bulk of the non-current liabilities are financial liabilities amounting to P120.15 million or 91.35 percent. This represents non-current portion of Bill/Bonds/Loans Payable of SMWD to LWUA, PNB, NHA, LBP and other creditors.

Equity – 365.63 million

SMWD’s aggregate equity of P365.63 million for CY 2019 included an increase of 6.32 percent over the CY 2018 balance of P343.90 million.

6.4.2 Financial Performance

The comprehensive income of SMWDs in CY 2019 amounted to P21.14 million. This was lower by P34.50 million or 62.00 percent from CY 2018 comprehensive income of P55.64 million. Combined income and combined expenses for CY 2019 amounted to P272.76 million and P251.61 million, respectively.

Income – P272.76 million

In CY 2019, total income amounted to P272.76 million, which is P19.66 million or 7.77 percent higher than the CY 2018 total income of P253.09 million. Service and Business Income of P270.03 million accounted for the highest share to SMWD’s total income, equivalent to 99.00 percent. The comparative composition of income for CYs 2019 and 2018 is shown in Table I-5.

Table I-5 Comparative Composition of Income
(in thousand pesos)

Particulars	2019	2018	Variations	% Variance
Service and Business Income	270,031	248,981	21,051	8.45%
Miscellaneous Income	2,724	4,113	(1,389)	(33.78%)
Total Income	272,756	253,094	19,661	7.77%

Expenses – P251.61 million

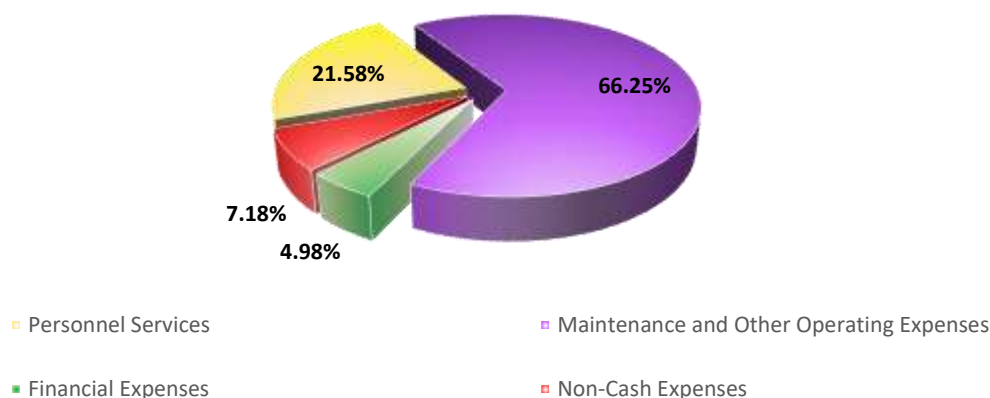
Total expenses of SMWD for CY 2019 of P251.61 million was a result of an increase of P54.16 million or 27.43 percent over the CY 2018 expenses of P197.46 million. The comparative composition of income for CYs 2019 and 2018 is shown in Table I-6.

Table I-6 Comparative Composition of Expenses
(in thousand pesos)

Particulars	2019	2018	Variations	% Variance
Personnel Services	54,307	46,265	3,952	9.34%
Maintenance and Other Operating Expenses	166,700	121,590	2,748	2.31%
Financial Expenses	12,530	13,141	(1,477)	(10.10%)
Non-Cash Expenses	18,077	16,460	(2,215)	(11.86%)
Total Expenses	251,614	197,456	3,009	1.52%

Exhibited in Chart I-6 is the composition of CY 2019 expenses.

Chart I-6 Composition of Expenses



Of the total expenses of P251.61 million, P166.70 million or 66.25 percent are Maintenance and Other Operating Expenses. The biggest portion of MOOE are payment for Generation, Transmission and Distribution Expenses which includes payment for purchased water and power cost of pumphouses in the total amount of P127.68 million.

Two-Year Ratio Analysis (in thousand pesos)			
Particulars	2019	2018	% Variance
Liquidity Ratios			
Current Ratio	2.05 0	2.18	(5.97%)
Quick Ratio	1.41 1	1.52	(7.42%)
Accounts Receivables to Working Capital	0.06 0	0.05	15.39%
Inventory to Working Capital	0.35 0	0.43	(17.60%)
Sales to Working Capital	3.84 4	3.02	27.43%
Activity Ratios			
Accounts Receivable Turnover	65.36	59.18	10.43%
Days Sales in Receivables	5.58	6.17	(9.44%)
Profitability Ratios			
Net Income Ratio (%)	7.83%	22.35%	(64.96%)
Interest Expense/ Operating Revenue (%)	4.64%	5.28%	(12.04%)
Debt Service Ratio	1.85	2.74	(32.29%)
Operating Ratio	0.89	0.74	19.61%
Return on Asset (%)	3.77%	10.03%	(62.43%)
Return on Equity (%)	6.15%	20.37%	(69.82%)
Coverage Ratios			
Debt to Total Assets	0.35	0.38	(8.36%)
Debt to Equity	0.53	0.61	(12.84%)

6.5 Number of Personnel

Regular	76
Casual	17
Job Orders	54
Total	151
<i>Number of Connection per Employee</i>	236 connection per employee

7. SMWD ACTIVITIES

7.1 Water Saver Educational Program (WSEP) and Proper Waste Segregation Program

With the partnership of SMWD with Water.org in 2019, additional information on the importance of safe water is discussed during the orientation. A representative from Water.org also joins SMWD employees in conducting Water Savers' Education Program.



The WSEP is conducted in public and private schools to educate children from the intermediate grades on the importance of water. 31 schools with a total of 3,159 students both from public and private schools participated in this program of SMWD. (see table 1 of section 7.1)

As part of the Annual Gender and Development, the Human Resource Development and General Services Division also conducted proper waste segregation together with the Water Saver School Orientation Program (WSEP) of SMWD.



7.2 New Service Connection Orientation

Part of our information campaign to educate our concessionaires and future concessionaires about the SMWD is conducting orientation for new connection applicants. Attendance to this orientation is part of their requirements to for the new water service connection. The orientation is conducted every Saturday except if a holiday falls on a Saturday.

The Division was able to conduct a total of **52 orientations** for the whole year of 2019 with **2,195** new water connection applicants. **843** of these attendees were male while the **1,352** are female.

7.3 Annual Drug Test

The Human Resource personnel and Ms. Jovita I. Dalmacio, Department Manager of Administrative, Finance and General Services, secretly organized with DrugCheck Phils. Inc. the scheduled of drug testing to SMWD employees. On November 18, 2019, the DCPI conducted a random drug testing thru urine samples at Farmacia Emilia, dulong bayan, Santa Maria, Bulacan. 140 out of 152 (regular, casual and job order) agreed to participate in the drug test covering two (2) parameters – methamphetamine hydrochloride (shabu) and tetrahydrocannabinol (marijuana).

Though there were 12 employees who were not be able to attend the activity or schedule for test, the SMWD still attains its certificate as a drug-free workplace.



7.4 Bulacan Association of Water Districts (Activities)

For the celebration of World Water Day Celebration every month of March, BAWD organized a provincial-wide motorcade which divided into two groups: South Bulacan and North Bulacan on March 22, 2019. The route for each group is the following:

a. Group 1: South Bulacan

Plaridel-Guiguinto By-pass, Balagtas, Bocaue, Marilao, Obando, Bulakan, Guiguinto, Malolos, Paombong, Hagonoy, Calumpit, Pulilan, Plaridel, Bypass to Guiguinto-House of Friendship

b. Group 2: North Bulacan

Plaridel-Guiguinto By-pass, Pulilan, Baliwag, San Rafael, San Ildefonso, San Miguel, back to By-pass, Bustos, Angat, Norzagaray, San Jose del Monte, Sta. Maria, Pandi, By-pass Guiguinto-House of Friendship



The Annual visitation at planting site in Biak-na-Bato of BAWD on April 12, 2019 was coincides with the Lenten season. Employees from each water districts join the “Way of the Cross” installed along the pathway up to the top of the plant site.



7.5 Civil Service Commission (CSC) Activities



In line with the celebration of the Philippine Civil Service with the theme “Civil Service at 119: Upholding Integrity and Building a High-Trust Society”, the Council of Personnel Officers (CPO) Bulacan Chapter, Inc. in partnership with the Civil Service Commission Field Office Bulacan spearheaded a “Zumba/Unity Walk for a Cause and Quiz Bee” last September 06, 2019 at the Malolos Sports and Convention Center, Malolos City, Bulacan.

8. GENDER AND DEVELOPMENT (GAD)

With the formula of (D) Total GAD Actual Cost/Expenditure divided by the (A) Total Corporate budget of SMWD, the SWMD got the (E) percentage spend for the Gender and Development Programs (**Table 1.2.1**).

Table 1.2.1 – Summary of GAD Accomplishment Report

(A) Total Corporate Budget of SMWD	(B) Total of Organizational Focused	(C) Total of Client Focused	(D) Total GAD Actual Cost/Expenditure	(E) Percentage
353,862,291.49	505,251.75	26,791,868.56	27,297,120.31	7.71%

The SMWD GAD Accomplishment Report for Y2019 was submitted to Local Water Utilities Administration on January 31, 2019.

9. SYSTEM DEVELOPMENT, IMPROVEMENT AND FUTURE PROJECTS

The main reason why **Santa Maria Water District (SMWD)** is developing new systems is to manage three key challenges: cost efficiency, service quality and a contribution to the productivity.

- *New Inventory System*
- *New Accounting System*
- *Integrate sale of Fittings in Billing & Collection*
- *Field Services Mobile Assistant*

10. FIVE-YEAR FINANCIL AND OPERATING HIGHLIGHTS

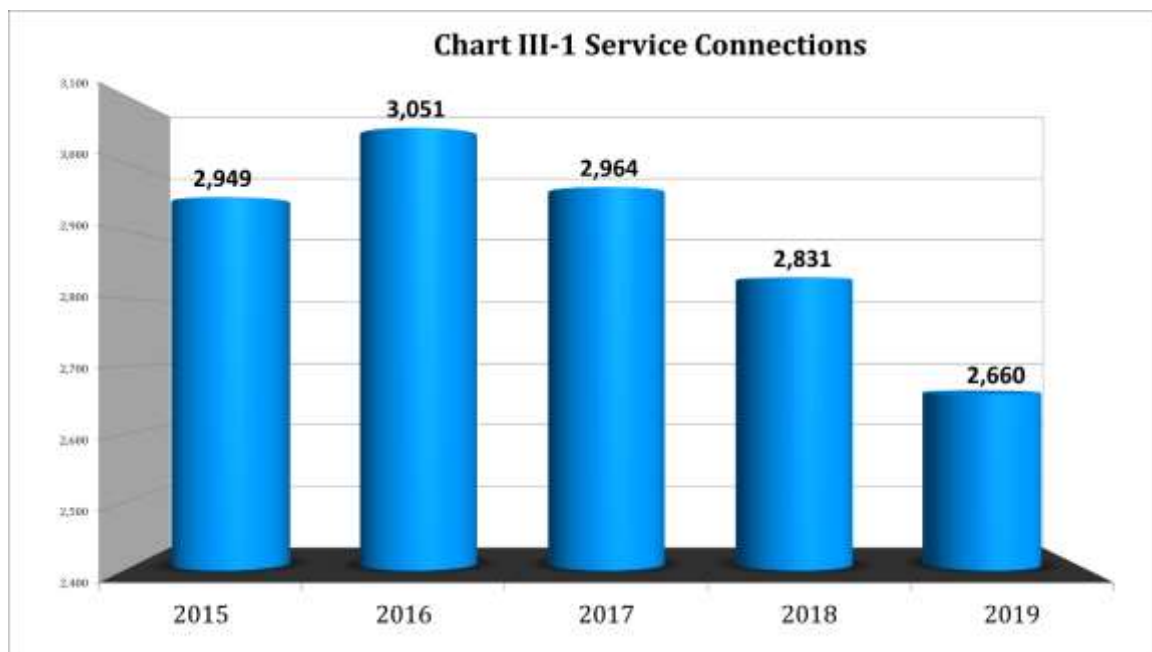


Chart III-2 Total Billed & Total Services

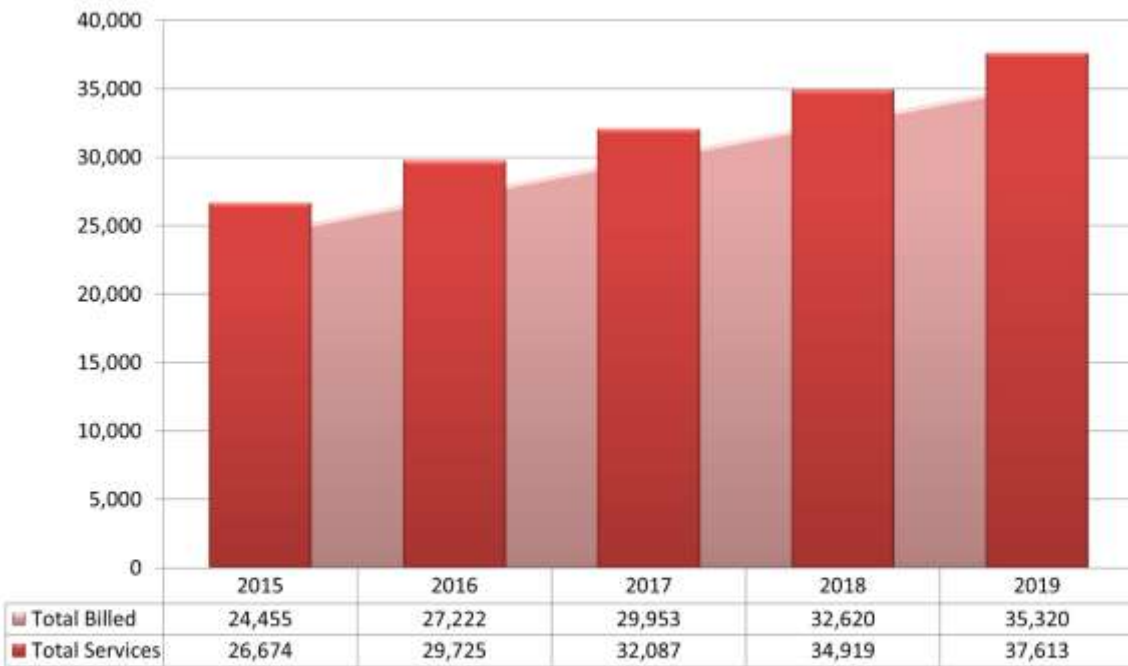


Chart III-3 Population Served

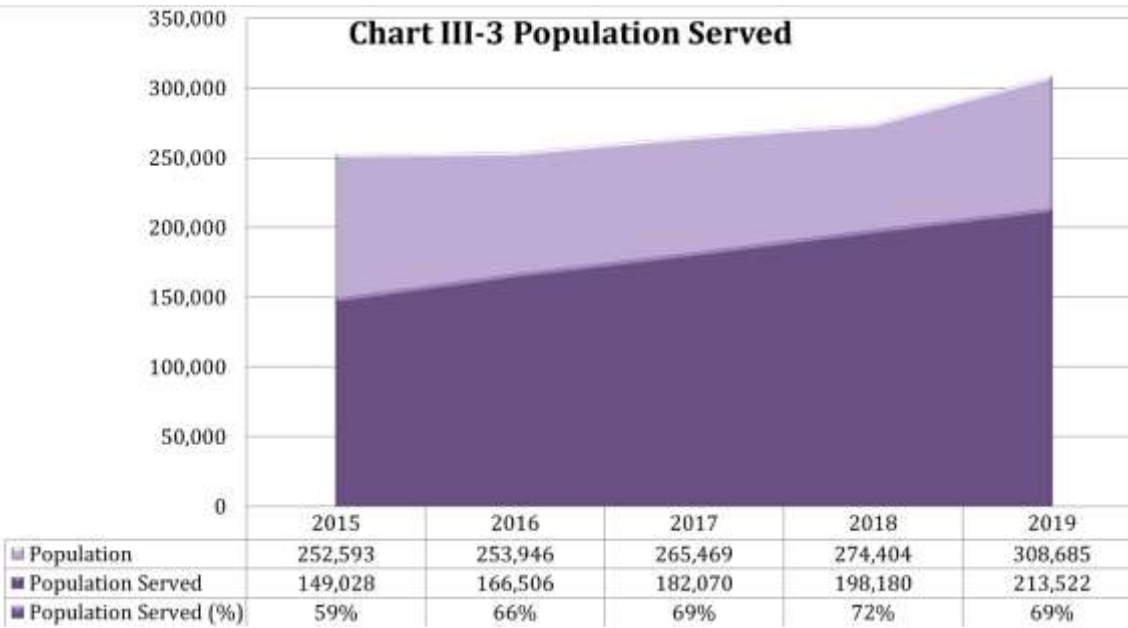


Chart III -4 Water Production

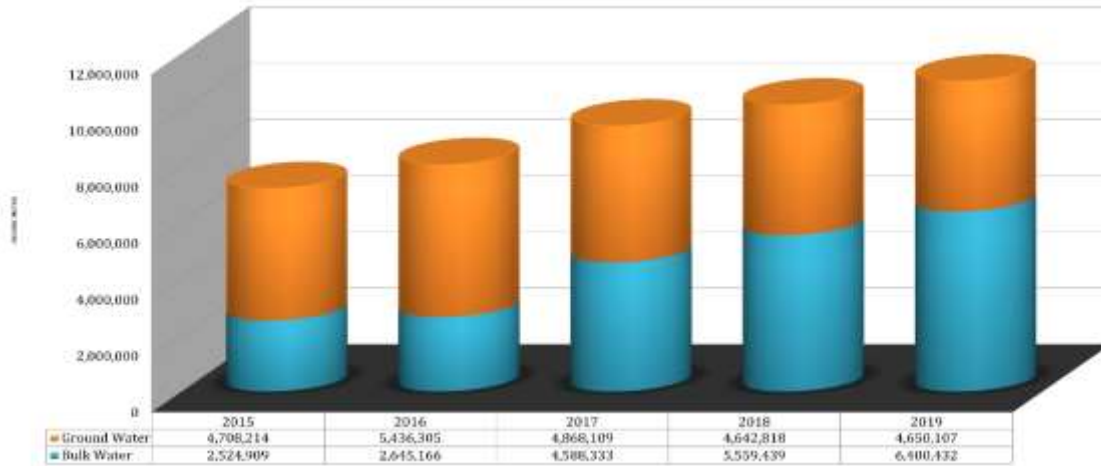


Chart III-5 Power Cost and Consumption

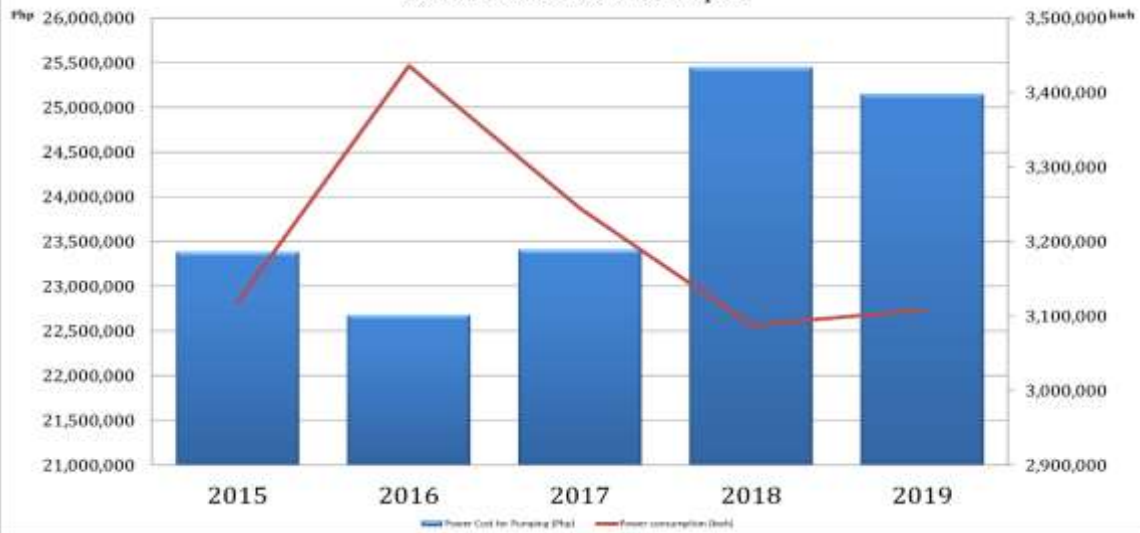


Chart III -6 Total Pipelines (lm)



