



# Santa Maria WATER DISTRICT

## SUPPLEMENTAL/ BID BULLETIN SBB2022-006

### “SUPPLY, DELIVERY, INSTALLATION, TESTING AND COMMISSIONING OF ADDITIONAL AIR CONDITIONING UNITS FOR THE SANTA MARIA WATER DISTRICT’S NEW OFFICE BUILDING” Identification No. PB2022-SMWD-G-010

The Pre-Bid Conference for the project stated above was held on June 22, 2022 at 10:00 AM. As a result of some clarifications of the prospective bidders, the BAC is issuing this Supplemental Bid Bulletin in accordance with Section 22.5.2 of IRR of RA No. 9184, to clarify matters thereby making some changes and addendum to the previously published Bidding Documents.

#### CHANGES AND ADDENDUM:

#### 1. SPECIAL CONDITIONS OF CONTRACT and BID DATA SHEET:

<p>FROM: GCC Clause 1 – <b>SCOPE OF WORK</b> Furnish items, articles, plant, labor, equipment, appliances, materials and perform operations necessary for the completion of the air condition system</p>	<p>TO: GCC Clause 1 – <b>SCOPE OF WORK</b> Furnish items, articles, plant, labor, equipment, appliances, materials and perform operations necessary for the completion of the air condition system. Since this procurement project includes installation and construction works, the SMWD BAC decided to require the submission of <b>PCAB License</b>.</p>
<p>FROM: GCC Clause 1 – <b>SPARE PARTS</b> The Supplier shall carry sufficient inventories to assure ex-stock supply of consumable spare parts or components for the Goods for a period of <i>[indicate here the time period specified. If not used indicate a time period of three times the warranty period]</i>.</p>	<p>TO: GCC Clause 1 – <b>SPARE PARTS</b> The Supplier shall carry sufficient inventories to assure ex-stock supply of consumable spare parts or components for the Goods for a period of <b>up to year 2030</b> Pertinent to this a <b>Certificate of Availability of Spare Parts shall be issued by the supplier and/or manufacturer</b>.</p>
<p>FROM: GCC Clause 1 – <b>AFTER SALES</b></p> <ul style="list-style-type: none"> <li>Free service maintenance by the contractor during the warranty period of a minimum of twelve (12) months, excluding consumables and replacement of parts due to normal wear and tear.</li> </ul>	<p>TO: GCC Clause 1 – <b>AFTER SALES</b></p> <ul style="list-style-type: none"> <li>Free service maintenance by the contractor during the warranty period of a minimum of twelve (12) months, excluding <b>those not mentioned in SCC Clause No. 5</b>, consumables and replacement of parts due to normal wear and tear.</li> </ul>
<p>FROM: GCC Clause 2 – <b>TERMS OF PAYMENT</b> Ten percent (10%) of the contract amount upon start of the project.</p>	<p>TO: GCC Clause 2 – <b>TERMS OF PAYMENT</b> <b>1<sup>st</sup> payment - Thirty percent (30%)</b> of the contract amount upon <b>Fifty percent (50%)</b> completion.</p>



# Santa Maria WATER DISTRICT

<p>Thirty percent (30%) of the contract amount upon Fifty percent (50%) completion.</p> <p>Thirty percent (30%) of the contract amount upon Seventy-Five percent (75%) completion.</p> <p>Thirty percent (30%) of the contract amount upon One Hundred percent (100%) completion.</p> <p>A ten percent (10%) retention money shall be applied for every progress payment being made. This will be released after the lapse of the warranty period, which in this case is upon verification of full delivery and that same items are free from patent and latent defects.</p> <p>Contract price shall be subjected to withholding Taxes</p>	<p><b>2<sup>nd</sup> Payment - Thirty percent (30%)</b> of the contract amount upon Seventy-Five percent (75%) completion.</p> <p><b>3<sup>rd</sup> Payment - Forty percent (40%)</b> of the contract amount upon One Hundred percent (100%) completion.</p> <p>A ten percent (10%) retention money shall be applied for every progress payment being made. This will be released after the lapse of the warranty period, which in this case is upon verification of full delivery and that same items are free from patent and latent defects.</p> <p>Contract price shall be subjected to withholding Taxes</p> <p><b>ADVANCE PAYMENTS PROHIBITED.</b> No payment in advance or in anticipation of services or supplies to be provided by this Contract shall be made by the Santa Maria Water District (SMWD). As stated in Section 88 of PD No. 1445, otherwise known as the "Government Auditing Code", generally prohibits advance payment for services not yet rendered or for supplies not yet delivered under any government contract unless prior approval of the President is obtained</p>
<p>Additional Provision for GCC Clause 1 – <b>WARRANTY/GUARANTEE</b> g. <b>RESPONSE TIME</b> – The winning bidder/supplier shall at all times be available when required by the SMWD for repairs or trouble shooting. <b>The lead time is two (2) hours.</b></p>	
<p>BID DATA SHEET Clause 21.2 The prospective bidder shall submit PCAB License as additional contract document, with the following category: <b>PCAB License:</b> <b>CLASSIFICATION - "SPECIALTY - Air conditioning and Refrigeration"</b> <b>CATEGORY – "A"</b> <b>SIZE RANGE – "SMALL B"</b></p>	

**2. SECTION VI – SCHEDULE OF REQUIREMENTS.** Please take note of some corrections made (in red tint):

Item Number	Description	Quantity	Total (ABC)	Delivered, Weeks/Months
				Thirty (30) calendar days from receipt of Purchase Order (PO)
<b>1</b>	<b>Air condition System</b>			
1 (a)	Ceiling Cassette Inverter – 5TR; at least 60,000 Btu/hr Cooling	4 units		





# Santa Maria WATER DISTRICT

	capacity, 6.0 HP Rating, EER at least 10.0 Btu/Hr-W			
1(b)	Ceiling Cassette Inverter – 2.5HP; at least 24,000 Btu/hr Cooling Capacity, 2.5HP/2TR Rating, EER at least 11.06 Btu/Hr-W	8 units		
1(c).	Wall Mounted Inverter 2HP – at least 18,000 cooling capacity; 2 HP rating; EER at least 15.1	4 units		
1(d)	Other parts and accessories (lineset PVC enclosure)	1 lot		

### 3. SECTION VII – TECHNICAL SPECIFICATIONS. Please take note of some corrections made (in red tint):

Item	Specification	Statement of Compliance (Comply or Not Comply)
<b>1</b>	<b>Aircondition System</b>	
1 (a)	(a) Ceiling Cassette Inverter – 5TR; at least 60,000 Btu/hr Cooling capacity, 6.0 HP Rating, EER at least 10.0 Btu/Hr-W, 3 Phase 230V	
1(b)	(b) Ceiling Cassette Inverter – 2.5HP; at least 24,000 Btu/hr Cooling Capacity, 2.5HP/2TR Rating, EER at least 11.06 Btu/Hr-W, Single Phase 230V	
1(c).	(c) Wall Mounted Inverter 2HP – at least 18,000 Btu/hr Cooling capacity; 2HP rating; EER at least 15.1 Btu/Hr. –W, Single Phase-230V	
1(d)	Lineset for ACU will be enclosed with PVC “from indoor to outdoor with 4” PVC Pipe (Orange)	
1(e)	Communication Wire and power supply from indoor to outdoor is separated from the lineset, with EMT. Power supply to outdoor unit be sealed with Liquid Tight Conduit.	
1(f)	Drain line will be at least ¾” insulated tapped to 1” main drain riser properly looped and insulated. Drain Lines of the additional units may be interconnected with the existing drain	



# Santa Maria

WATER DISTRICT

	lines to avoid multiple pipes overhead and pipes exposed at the building rear exterior.	
1(g)	Condenser mounting will be extended for catwalk provision for repair and maintenance.	

4. The Mechanical Plan hereby attached is also a part of this Bid Supplement. Interested bidders may secure copy of this plan from the Procurement Office during site inspection or may call us at telephone number (044) 8798-8897/0917-138-8683.

This SUPPLEMENTAL/BID BULLETIN, is issued this 23rd day of June 2022 and will officially form part of the bidding documents.

For the guidance and information of all interested bidders.

**sgd**



MARIA LEONORA S. ROMARATE  
Chairman Bids and Award Committee

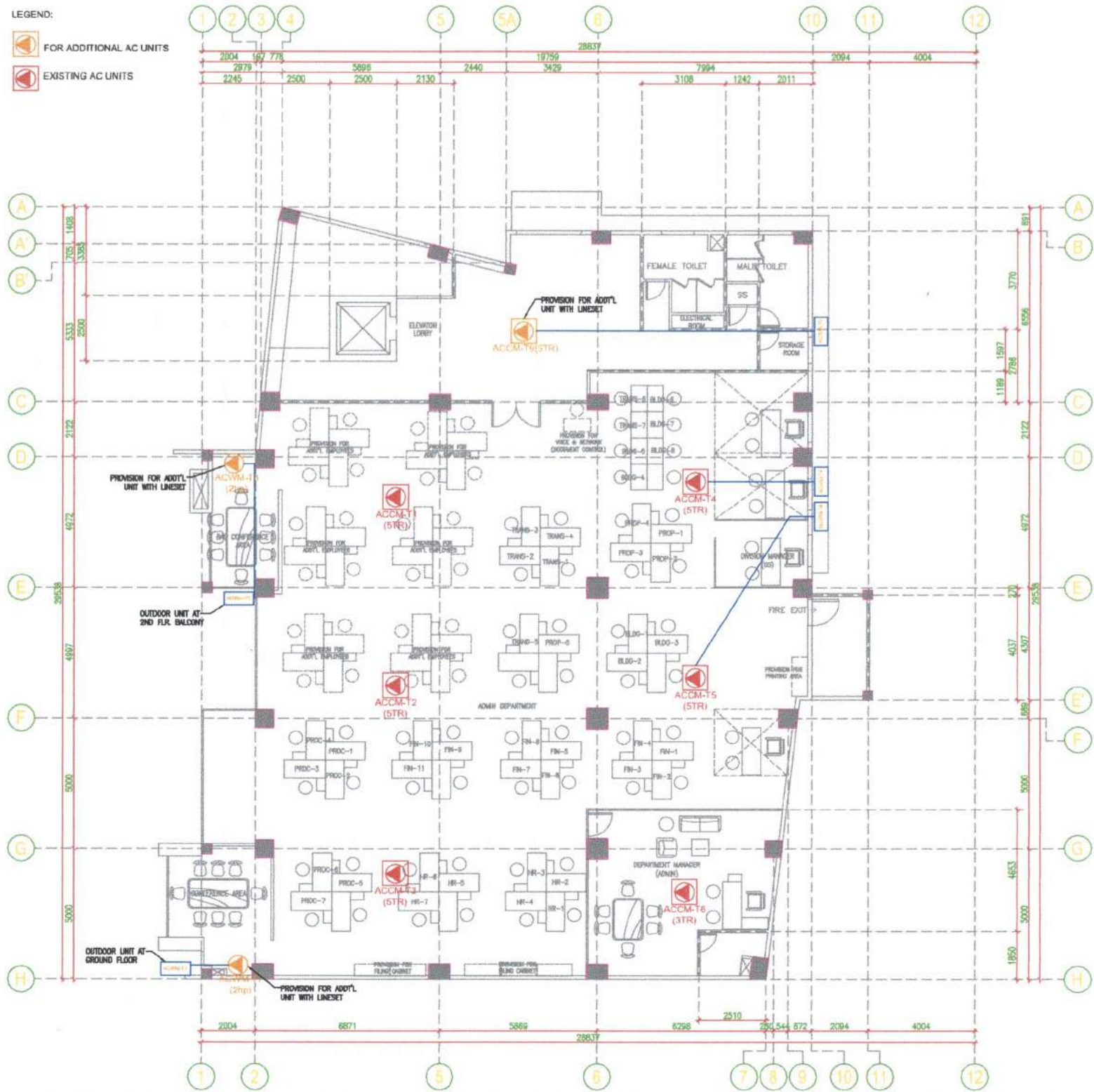
//csf







LEGEND:

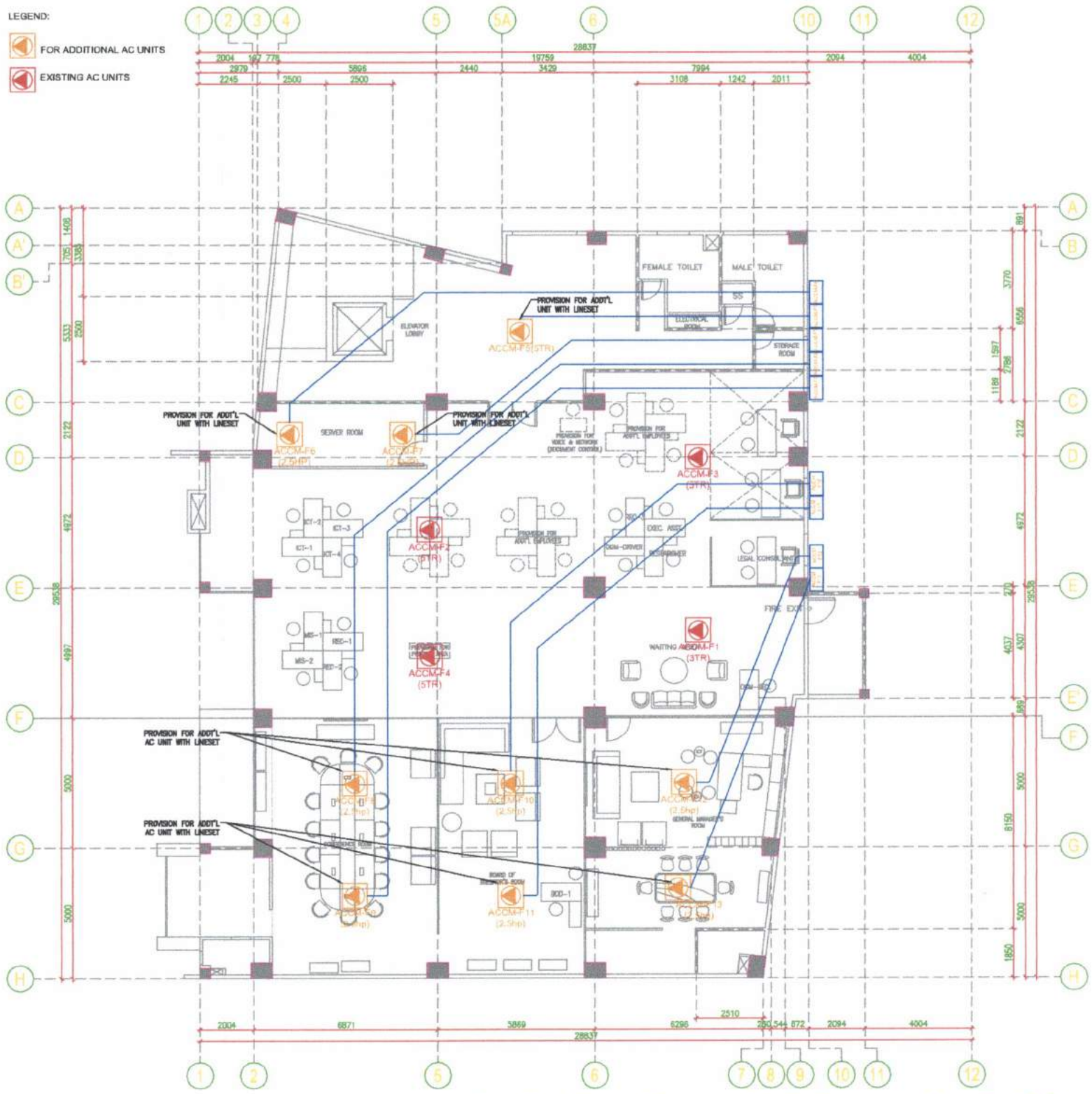
-  FOR ADDITIONAL AC UNITS
-  EXISTING AC UNITS



# THIRD FLOOR PLAN - ACU


LEGEND:

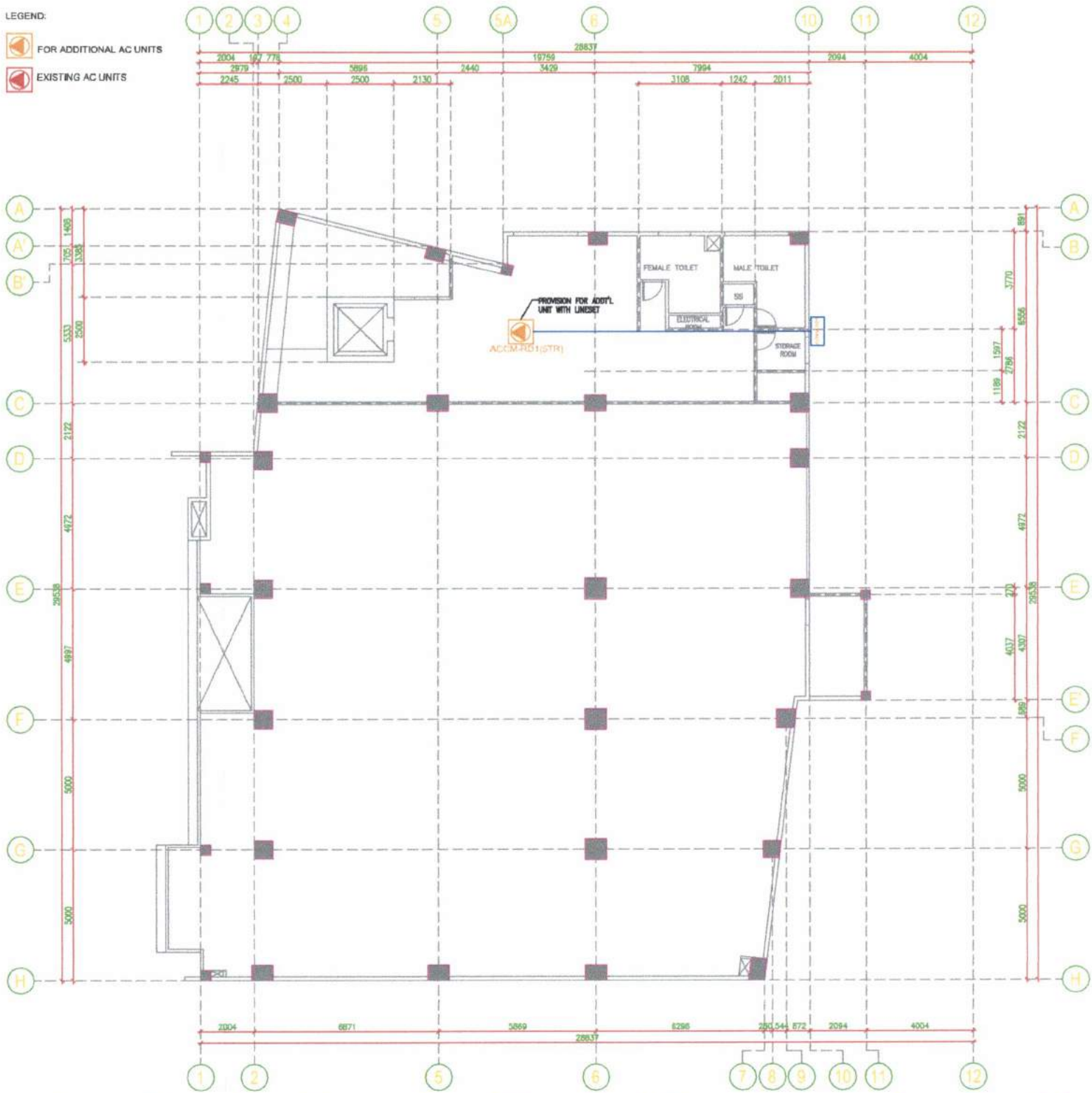
-  FOR ADDITIONAL AC UNITS
-  EXISTING AC UNITS



# FOURTH FLOOR PLAN - ACU

LEGEND:

-  FOR ADDITIONAL AC UNITS
-  EXISTING AC UNITS



# ROOF DECK - ACU